

Name \_\_\_\_\_ Car \_\_\_\_\_ Car Year \_\_\_\_\_ Eng. \_\_\_\_\_

Stock Front Suspension? Yes \_\_\_\_\_ No \_\_\_\_\_

Phone \_\_\_\_\_ Fax \_\_\_\_\_

## RADIATOR OVERALL DIMENSIONS

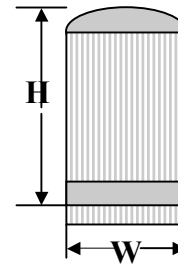
**WIDTH** Inches

- 16  16 1/2  17  17 1/2  18  18 1/2  19

NOTE: For Vertical Radiators Wider Than 19 in. Contact PRC

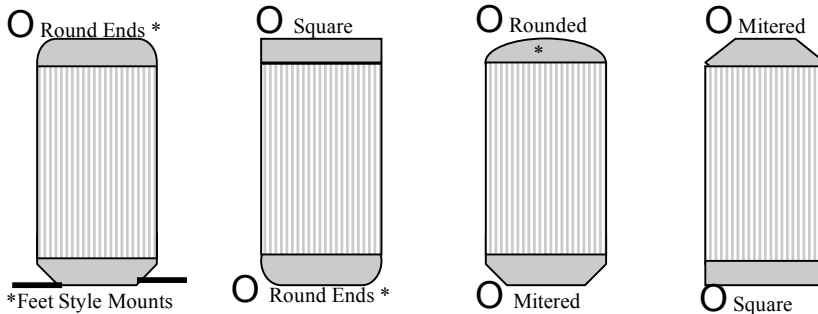
**HEIGHT** Inches

- 22  23  24  25  26  27  OTHER \_\_\_\_\_



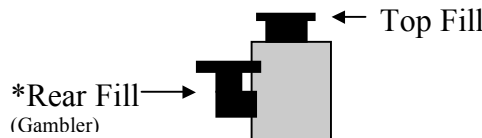
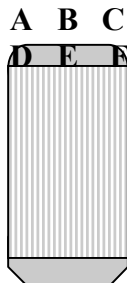
## RADIATOR TANKS

Choose the desired Top Tank style and the desired Bottom Tank style.



*Minimal added charges*  
\*Wider than 3 inches top tank  
\*Rounded ends  
\*Rear Fill (Gambler)  
\*Rod Mount (32 Ford Style)  
\*Feet Style Mounts

## FILL NECK



Choose the desired location of the fill neck. Assume you are looking at the Eng. Side of the radiator.

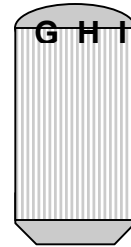
- Location **A** (Top Fill)  Location **B** (Top Fill)  Location **C** (Top Fill)  
 Location **D** (Rear Fill)  Location **E** (Rear Fill)  Location **F** (Rear Fill)

### Inlet Size and Location (Top Hose)

Location **G**  Location **H**  Location **I**

Size  1 ¼ inch  1 ½ inch  1 ¾ inch

**NOTE: Most all FORD and GM engines use 1½ top hoses.**  
(Except later models)

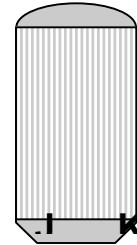


### Outlet Size and Location (bottom hose)

Location **J**  Location **K**

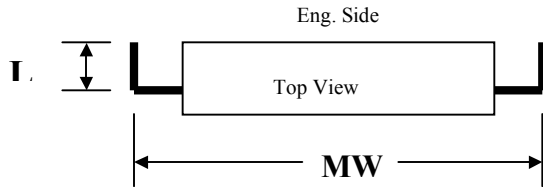
Size  1 1/4  1 1/2  1 ¾

**Note: Most all Ford and GM V8 water pumps use 1 ¼ bottom hose**  
**Note: Drain petcock will be located on the side opposite the outlet**



**PRC Universal Mounting System**  
(Contact Your PRC Distributor For

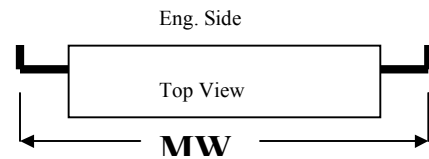
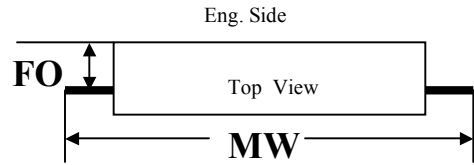
#### Radiator Mounting Style



Please specify the mounting width (**MW**). This is the width of the radiator with mounting brackets installed.

Please specify the flange off set (**FO**). This is the distance from the back ( Eng. Side ) edge of the radiator to the mounting bracket.

Please specify the leg width (**LW**). This is the length of the section of the mounting bracket that is parallel to the side of the radiator.



**PRC. Products Distributed By:**

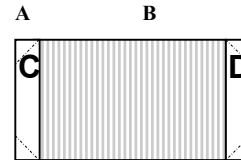
#### Options

- Billet Cap !6# (recovery system)  7# (no recovery system)
- Internal Transmission cooler
- Extra ¼ or ½ bung for Thermo switch
- Aluminum In-line Transmission cooler
- Shroud
- 16 inch Spal electric fan
- Aluminum fan / condenser mount
- Aluminum A/C condenser
- Aux. Thermo fan sensor
- Adjustable fan switch

Name \_\_\_\_\_ Car \_\_\_\_\_ Car  
 Year \_\_\_\_\_ Eng. \_\_\_\_\_  
 Stock Front Suspension? Yes \_\_\_\_\_ No \_\_\_\_\_  
 Phone \_\_\_\_\_ Fax \_\_\_\_\_

**Fill Neck**

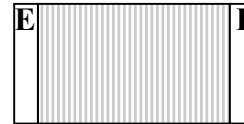
Choose the desired location of the filler neck.  
 Assume you are looking at the side of the  
 radiator that faces the engine.



- Location A (Top Fill)  Location B (Top Fill)  
 Location C (Rear Fill)  Location D (Rear Fill)

**Inlet Size And Location (Top Hose)**

- Location E  Location F  
 Size:  1/4  1 1/2  1 3/4  AN fittings available  
 Note: Any hose angle available at extra charge.



**Outlet Size and Location (Bottom Hose)**

- Location G  Location H  
 Size:  1 1/4  1 1/2  1 3/4  AN fittings available at extra charge  
 Note: any hose angle available at extra charge  
 Note: Drain petcock will be located on the side opposite the outlet

